

FILE DESCRIPTION:

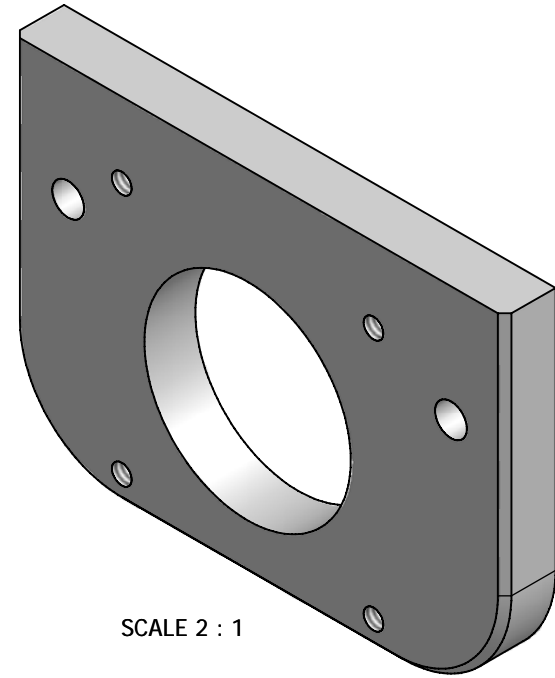
SiegX2 "Mini-Mill" CNC Conversion / X-Axis

INSTRUCTIONS:

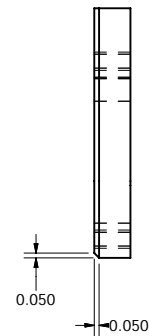
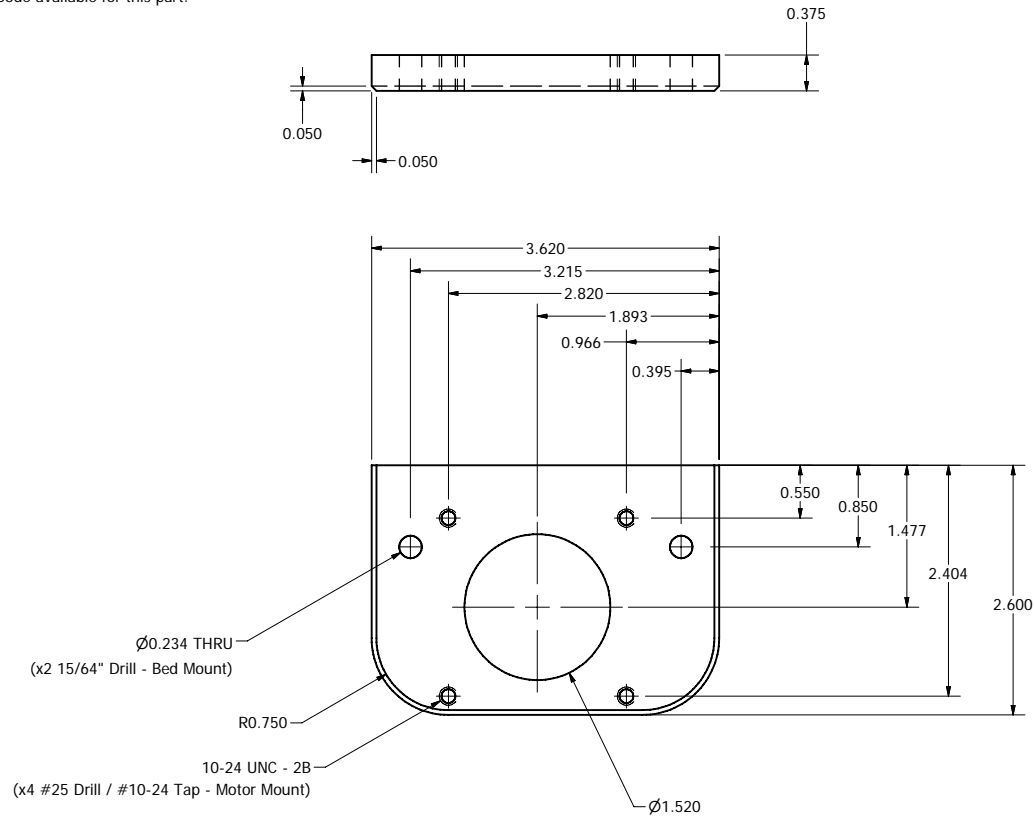
- X-Axis motor plate mounts to left side of bed:
1. Remove existing plate.
 2. Mount NEMA 23 spec motor to plate.
 3. Mount plate/motor assembly to left side of bed.

NOTES:

1. Fillet optional. When machining 1st part, ignore fillet.
2. Material 6061-T6 aluminum plate.
3. All dimensions in inches (English).
4. G-Code available for this part.



SCALE 2 : 1



DRAWN david@fignoggle.com	10/18/2005	figNoggle Designs (www.fignoggle.com)		
CHECKED david	10/18/2005	TITLE		
QA		figNoggle.com SiegX2 CNC X-Axis Plate		
MFG david	10/18/2005	SIZE C	DWG NO figNoggle_CNC_X-AxisPlate	REV 3.2
APPROVED david	10/18/2005	SCALE	SHEET 1 OF 1	