

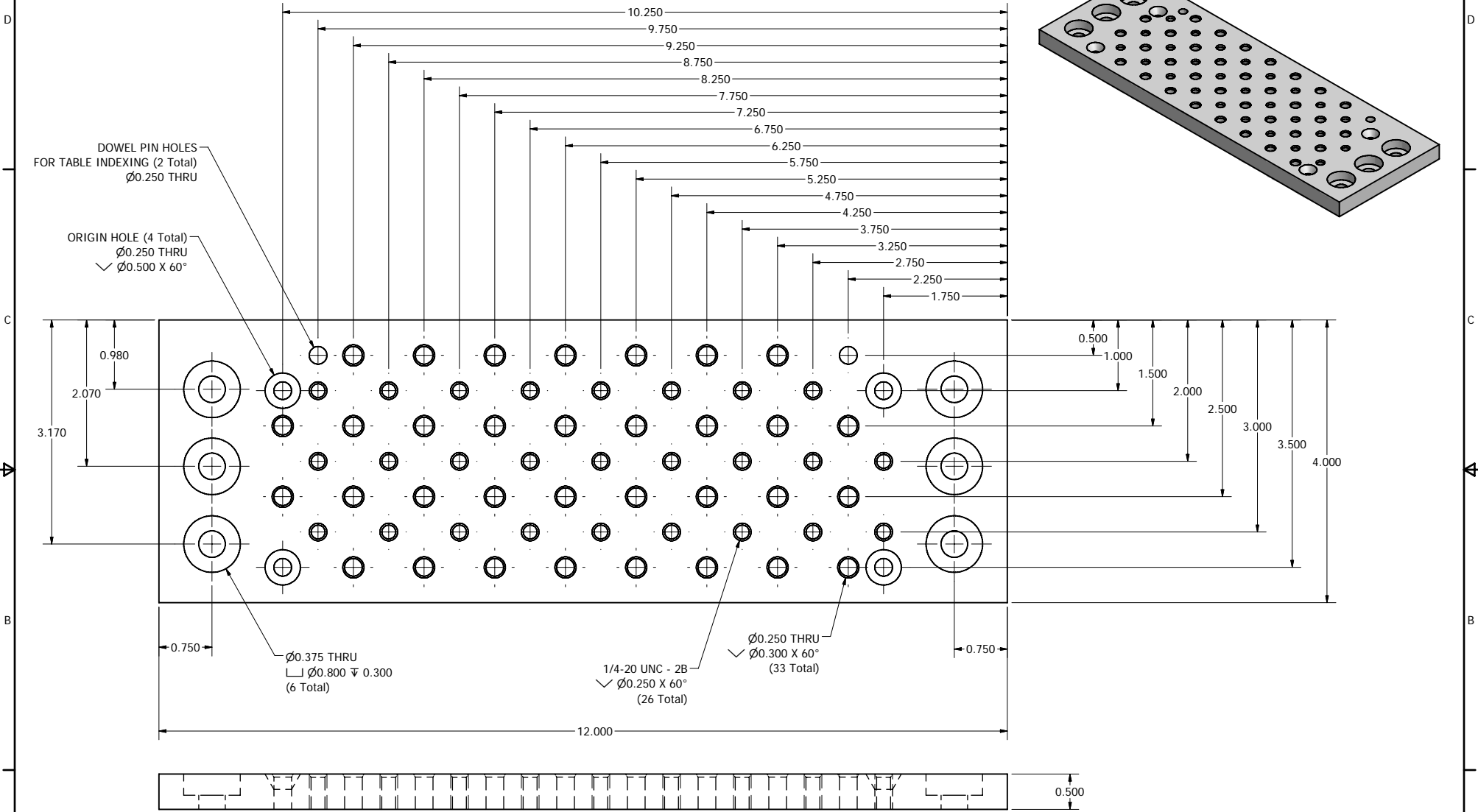
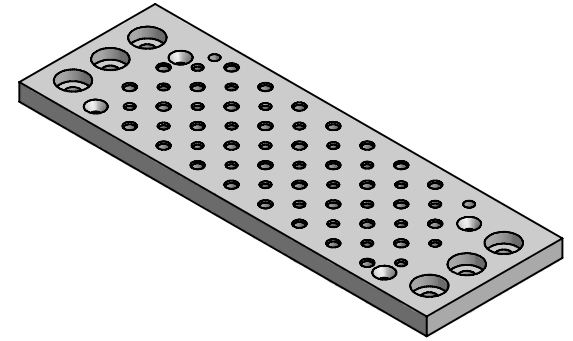


FigNoggle Designs

CNC Plans for Asian Mini-Mills

Asian/SING-made (X2) mini-mills
Harbor Freight (#44991), Grizzly (#08689), Micro-Mark (#82573), Homier (#3947), Cummins (#7877)

FOR PERSONAL USE ONLY. FREE TO DISTRIBUTE. DRAWING PROVIDED AS-IS.
MANUFACTURING/PRODUCTION RIGHTS NOT RELEASED.



NOTES

- ALL INCH TOLERANCES X.XX ARE +/- 0.01" X.XXX ARE +/- 0.001"
- MATERIAL IS EXTRUDED 6061-T6 ALUMINUM BAR STOCK OR BETTER (E.G. CAST ALUMINUM JIG AND TOOL PLATE - "MIC-6" BY ALCOA / ALUMAX, "K100" BY ALPASE)

Copyright 2008. figNoggle Designs. All rights reserved.

DRAWN david@fignoggle.com	3/26/2007	figNoggle Designs / www.fignoggle.com	
CHECKED		TITLE	
QA		X2 MINI-MILL FIXTURE PLATE V2	
MFG			
APPROVED			
		SIZE C	DWG NO x2-fixture-plate-v2
		SCALE	REV 2.0
		SHEET 1 OF 1	